

Do Children Interpret ‘or’ Conjunctively?

Dimitrios Skordos

University of Calgary

E-mail: e-mail:dimitrios.skordos@ucalgary.ca

Roman Feiman

Brown University

E-mail: e-mail:roman_feiman@brown.edu

Alan Bale

Concordia University

E-mail: e-mail:alancbale@gmail.com

David Barner

University of California

E-mail: e-mail:barner@ucsd.edu

First version received 4 July 2018; Second version received 23 November 2019; Accepted 25 November 2019

Abstract

Preschoolers often struggle to compute scalar implicatures involving disjunction (*or*), in which they are required to strengthen an utterance by negating stronger alternatives, e.g. to infer that, ‘The girl has an apple or an orange’ likely means she does not have both. However, recent reports surprisingly find that a substantial subset of children interpret disjunction as *conjunction*, concluding instead that the girl must have both fruits. According to these studies, children arrive at conjunctive readings not because they have a non-adult-like semantics, but because they lack access to the stronger scalar alternative *and*, and employ doubly exhausted disjuncts when computing implicatures. Using stimuli modelled on previous studies, we test English-speaking preschoolers and replicate the finding that many children interpret *or* conjunctively. However, we speculate that conditions which replicate this finding may be pragmatically infelicitous, such that results do not offer a valid test of children’s semantic competence. We show that when disjunctive statements are uttered in contexts that render the speaker’s intended question more transparent, conjunctive readings disappear almost entirely.

1. INTRODUCTION

Older preschoolers and kindergarteners often struggle to compute scalar implicatures (SIs) involving quantifiers like *some* (Smith 1980; Noveck 2001; Papafragou & Musolino 2003) and logical operators like disjunction (Braine & Romain 1981; Chierchia *et al.* 2001). For example, when presented with an utterance containing *some* like the one in (1a), many

children fail to derive the implicature in (1c). Similarly, when presented with a sentence like the one in (2a), many children fail to derive an exclusive interpretation of *or* characterised by (2c):

- (1) a. The boy took some of the bananas.
b. The boy took all of the bananas.
c. The boy took some, but not all of the bananas.
- (2) a. The girl has an apple or an orange.
b. The girl has an apple and an orange.
c. The girl has an apple or an orange, but not both.

On most accounts, deriving an SI involves accessing a stronger alternative statement that is generated by replacing one scalar term (e.g. *some*, *or*) with another, stronger, one (e.g. *all*, *and*). For example, to derive an implicature for the sentence containing *some* in (1a), children must access and negate the stronger alternative in (1b). Likewise, to derive the implicature for the sentence containing *or* in (2a), children must access and negate the stronger alternative in (2b). On standard accounts of disjunction, a failure to do so should result in an inclusive interpretation, wherein the listener concludes that the utterance in (2a) is acceptable even when the girl has both an apple *and* an orange (Pelletier 1977; Gazdar 1979; McCawley 1993; Crain & Khlentzos 2010).

Children's difficulties with SI have been variously attributed to general processing limitations (Chierchia *et al.* 2001; Reinhart 2004; Pouscoulous *et al.* 2007), difficulty in understanding the communicative goals of the experimenters (Papafragou & Musolino 2003; Papafragou & Tantalou 2004), and a tendency to be more tolerant of pragmatic infelicity (Katsos & Bishop 2011). More recently, evidence has begun to accumulate in support of an account focusing on children's access to relevant linguistic alternatives that are necessary to derive an SI (Chierchia *et al.* 2001; Barner & Bachrach 2010; Barner *et al.* 2011; Foppolo *et al.* 2012; Hochstein *et al.* 2014; Skordos & Papafragou 2016; Tieu *et al.* 2016). These accounts argue that difficulties in accessing necessary linguistic alternatives might explain why children fail to derive implicatures, whether such difficulties are due to a lack of associations between scale mates, a failure to detect which alternatives are contextually relevant, or a lack of working memory capacity to compute the contribution of alternatives while simultaneously considering a sentence's basic meaning.

While most studies in support of the 'access to alternatives' view have focused on conditions under which children derive weak v. strong interpretations of utterances, both of which are available to adults, two recent studies have argued for this account by pointing to an entirely different form of evidence, namely the interpretation of disjunction as conjunction. Specifically, these studies report that, given an utterance like (2a) above, some children conclude that the girl must have both types of fruit. In one study documenting this phenomenon, Singh *et al.* (2016) tested 4- and 5-year-old English-speaking children ($N = 31$) using a modified Truth Value Judgment task (Crain & Thornton 1998). Surprisingly, they found that children accepted disjunctive statements (e.g. *The boy has an apple or a banana*) only about 35% of the time when one of the disjuncts was true (henceforth 1-Disjunct-True trials), but 76% of the time when both disjuncts were true (henceforth 2-Disjunct-True-trials). In addition, children displayed a similar behaviour with disjunction embedded under a universal quantifier (e.g. *Every boy has an apple or a*

banana), accepting 1-Disjunct-True trials about 45% of the time and 2-Disjunct-True trials, 75% of the time. This pattern of responses is particularly surprising when seen from the standard perspective that children often do not derive implicatures at all; if that were the case, they should generally be inclusive and be equally likely to accept disjunction in 1-Disjunct true and 2-Disjunct-True trials. Critically, Singh *et al.* classified children according to their individual response patterns: Four children performed in an adult-like manner, accepting 1-Disjunct-True utterances while rejecting 2-Disjunct-True utterances (henceforth 'Exclusive'). Another four children showed the pattern of failure often reported in previous studies, accepting both 1-Disjunct-True and 2-Disjunct-True trials (henceforth 'Inclusive'). Finally, 21 out of 31 children (or 67%) responded as if *or* was *and*, rejecting 1-Disjunct-True utterances while accepting 2-Disjunct-True trials (henceforth 'Conjunctive').¹

Adopting the 'access to alternatives' account, Singh *et al.* argue that children in their study arrive at conjunctive interpretations because they lack access to stronger alternative statements derived by replacing *or* with *and*. Consequently, they are restricted to deriving implicatures from alternatives that are contained within the original assertion—i.e. the individual disjuncts. Also, and critical to their account, Singh *et al.* adopt the grammatical view of implicature (Fox 2007; Chierchia *et al.* 2009), and propose that children's disjunctive alternatives are exhaustified before being negated, resulting in multiple exhaustification (for additional discussion of this account, see Crnič *et al.* 2015; Fox & Katzir 2011; Franke 2011; Katzir 2007; Spector 2016). Specifically, when children hear a disjunctive statement like (3a), they compute alternatives by exhaustifying each separate disjunct in (3b) and (3c), resulting in the statements in (3d) and (3e):

- (3) a. The girl has an apple or an orange.
- b. The girl has an apple.
- c. The girl has an orange.
- d. The girl has an apple but not an orange (i.e. only an apple).
- e. The girl has an orange but not an apple (i.e. only an orange).

The original disjunctive statement is then strengthened by negating these exhaustified alternatives, resulting in the statements in (4a) and (4b), which, when combined with the original statement result in a conjunctive meaning, in (4c).

- (4) a. It is not the case that the girl has only an apple.
- b. It is not the case that the girl has only an orange.
- c. The girl has an apple or an orange (6a), but does not have only an apple, and does not have only an orange (7a & 7b) (i.e. the girl has both an apple and an orange).

According to this theory, adults do not derive the implication in (4c) because they have access to the alternative with *and*—i.e. 'The girl has an apple and an orange'. The inclusion of this alternative, since it is stronger than the plain disjunctive statement, leads to its

1 Against this hypothesis that children simply think *or* always means *and*, Singh *et al.* (2016) point out that children do not derive conjunctive meanings in downward entailing environments, such as when disjunction is embedded under the scope of negation (Gualmini & Crain 2002; Goro & Akiba 2004; Jing *et al.* 2005), when it occurs in the antecedent of conditionals (Su 2014), and when it is in the nuclear scope of *only*, *before*, *not every*, etc. (Goro & Akiba 2004; Jing *et al.* 2005; Gualmini & Crain 2002; Notley *et al.* 2012; cf. Tieu *et al.* 2017; Singh *et al.* 2016, for discussion).

negation, and the corresponding inference that the girl does not have both.² This inference directly contradicts the inference in (4c). Since contradictory inferences are not permitted by the exhaustification operator, the derivation of (4c) is blocked (see Fox's 2007 discussion of *innocent exclusion* for details).³ Thus, on Singh *et al.*'s analysis, their study simultaneously supports the idea that access to alternatives limits children's implicatures, as well as the idea that children's implicatures can involve multiple iterations of exhaustification. As they note, such an analysis integrates work on acquisition (e.g. Paris 1973; Braine & Romain 1981; Tieu *et al.* 2017) with a broader account of multiple exhaustification, which previous studies have used to explain other forms of implicature, including so-called 'free choice' inferences (see Fox 2007; Chierchia *et al.* 2009; see also Geurts 2010; Franke 2011; Meyer Forthcoming, for accounts that do not employ multiple exhaustification).

The power of this unifying account depends on the reliability of the developmental data, and Singh, *et al.*'s findings are not conclusive in this regard. Whereas Singh *et al.*'s study tested a total of 56 children, only 31 were included in the final sample due to exclusions. In particular, 25 children were excluded because they failed to comprehend *and* as conjunction in control trials. The logic of this exclusion was that this subset of children failed to comprehend the task, and therefore could not contribute meaningful data to trials testing children's understanding of *or*. A problem with this logic, however, is that it assumes that one type of failure—failure to comprehend *and* in an adult-like way—is mere noise, while another type of failure—failure to comprehend *or* in an adult-like way—is meaningful. Whereas the experimenters systematically eliminated children with a disjunctive bias for both *and* and *or* (while retaining children with a conjunctive bias), they might have instead excluded all of the children who treated *or* as conjunctive. In that case, they might have found that *and* has a disjunctive meaning. Further, even if we accept the logic of Singh *et al.* and assume that the difficulty of their task required excluding 25 children, we might worry that task difficulty could also have affected the remaining non-excluded children. Although the 31 children who were included in their study met the relatively modest threshold of comprehending conjunction, the task may have nevertheless been hard enough that it was confusing even to these children, and may not have provided a valid test of their knowledge of logical connectives.

These potential problems with Singh *et al.* notwithstanding, a similar study by Tieu *et al.* (2017) found comparable results, while also reporting fewer data exclusions (8 children out of an original 54). In their study, Tieu and colleagues tested 4- and 5-year-old speakers of French and Japanese ($N = 46$) using a Truth Value Judgment task. Rather than asking children to assess descriptions of static scenes as in Singh *et al.*, Tieu *et al.* instead presented the task as a guessing game, on the rationale that using disjunctive statements to describe visible states of affairs is pragmatically infelicitous and potentially confusing to children. Similar to Singh *et al.*, they found that children accepted 1-Disjunct-True trials only 51% of the time while accepting 2-Disjunct-True trials 81% of the time (with no significant difference between French and Japanese children). Finally, like Singh *et al.* (2016), Tieu and

2 Note that since 'The girl has an apple and an orange' is one of the strongest possible utterances, the exhaustification operator has no effect on this alternative. Hence, $\text{Exh}([\text{The girl has an apple and an orange}]) = [\text{the girl has an apple and an orange}]$.

3 It is important to note that the inference that the girl does not have both is still computed due to the first level of exhaustification. ' $\text{Exh}(\text{Exh}(p \text{ or } q))$ ' minimally asserts ' $\text{Exh}(p \text{ or } q)$ ', which, if 'and' is an alternative, is equivalent to ' $p \text{ or } q$ but not both'.

colleagues classified children into groups and found that 14 children were Inclusive, 3 were Exclusive and 19 were Conjunctive (~41%). Ten additional children did not fit a predefined pattern, and were classified as 'Other'.

While the multiple exhaustification hypothesis is elegant in its ability to give a single model-theoretical account for both adults' free-choice readings of disjunction and children's quite different conjunctive readings, there are several reasons to suspect there may be alternative explanations for the developmental findings. First, the evidence for children's conjunctive interpretations of *or* outside of Tieu *et al.*'s and Singh *et al.*'s paradigms is limited. Most previous studies were not designed to directly assess conjunctive readings of *or*, with the result that there are relatively few demonstrations of this effect. For instance, some earlier studies did not include 1-Disjunct-True trials (Chierchia *et al.* 2001; Gualmini *et al.* 2001), and explicitly included the scalar alternative *and* in the paradigm. Others did not analyse their data in a way that would assess conjunctive interpretations (e.g. Hochstein *et al.* 2014). Further, in one of the previous cases in which evidence of conjunctive responses is reported, the rate of such responses was highly variable and task dependent, making it unclear how robust the finding is both within and across different experimental paradigms (Braine & Romain 1981). In another, Paris (1973) reported conjunctive behaviours in children when presented with sentences like, e.g. *The bird is in the nest or the shoe is on the foot*. However, he also found conjunctive behaviours in eighth graders (13-year-olds) and college-age students, who presumably have access to *and* as an alternative to *or*. From these results, Paris did not conclude that children interpret *or* conjunctively due to a semantic operation, but instead that the sentences used may not have been pragmatically felicitous in the contexts used in his study. Finally, one direct replication of Tieu *et al.*'s paradigm failed to find a comparable number of conjunctive responders. Sauerland & Yatsushiro (2018) used the same stimuli as Tieu *et al.* 2017 with German-speaking children, and found that only 2 out of 31 children in the 4- to 6-year-old age group consistently rejected the 1-Disjunct-True trials while accepting the 2-Disjunct-True trials. This may point to differences between languages, fidelity of methods across different labs, sampling error (since small sample sizes generate a wide range of effect size estimates), or a 'decline' effect, wherein replications of early reports exhibit regression to the mean, resulting in smaller effects in later studies (Schooler 2011).

Related to this first issue regarding the robustness of conjunctive responding is a concern raised by Tieu *et al.* In their study, they worried that aspects of the Singh *et al.* study may have proved confusing or infelicitous to children—e.g. that uttering a disjunctive expression like, *The boy is holding an apple or an orange* might be pragmatically odd in a context in which the speaker can see that the boy is holding, e.g. an orange but not an apple. Therefore, the utterance might be rejected because it implies, wrongly, that the speaker is ignorant (for evidence that 5-year-olds infer ignorance of speakers in exactly these situations, see Hochstein *et al.* 2014). Such factors might explain, in part, why the task used by Singh *et al.* resulted in high rates of exclusion (i.e. because once confused, children performed randomly), and possibly why children provided non-adult interpretations of disjunction.⁴

4 Specifically, it might explain why children have difficulty interpreting disjunction when it does not appear within the scope of a universal quantifier. However, since ignorance implicatures are not as readily available within the scope of universals, this cannot likely explain the conjunctive behavior of children with respect to these types of sentences.

Arguably just as confusing to children, however, are other properties of this design, also featured in the Tieu *et al.* study. In Tieu *et al.*, for example, children were presented a scene in which a chicken stood atop a hill with two objects (e.g. a bus and an airplane), and a puppet guessed what would happen next in the scene. On critical disjunctive test trials, the puppet guessed, e.g. ‘The chicken pushed the bus or the airplane’, after which the chicken either pushed one of the two objects or both of them down the hill. This occurred in all critical trials, such that for all 1-Disjunct-True trials, the character interacted with one of the two available objects and in the 2-Disjunct-True trials it interacted with both. Importantly, it was never the case that the chicken did not act at all (i.e. it always acted on at least one item present in the scene). The problem is that, on all of these trials, the puppet’s predictions never carried any actual information, because their guesses could only prove correct (i.e. acting on one or two objects), since not acting at all was never shown to be a possibility. Just as it is odd to predict the outcome of a tennis match, by saying, ‘*Either A or B will win*’, the disjunctive predictions in the Tieu *et al.* study may have been infelicitous and therefore confusing to children.⁵ On the one hand, such a prediction is good, because it is so likely to be correct. On the other hand, it is not really a prediction at all, since other alternative outcomes are so unlikely. As we note in the Discussion, this question may also have impacted the results of Singh *et al.*

In the Tieu *et al.* study, this type of pragmatic uncertainty may have been compounded by another aspect of their experimental design. After children were presented with each scene—and before they were asked to make a judgment—they were provided with a verbal description of what they had just witnessed. This description explicitly mentioned both items in the scene, either pointing out that the character acted upon one object, but not the other, or that the character acted on both objects. For instance, on trials in which a chicken pushed objects down a hill, children heard the puppet make their prediction, saw the events transpire, and then were told, e.g. ‘Look, the chicken pushed that!’ (e.g. the bus); ‘She did not want to break that one so she did not touch it. So, was Raffie right?’ Although this description was intended to remind children of what they had just experienced, it is possible that instead it complicated matters. First, the description may have made the task more difficult by increasing the time between the puppet’s disjunctive statement and the child’s response, making it more difficult to remember what the puppet had actually said. Second, the description may have made salient the character’s failure to act on one of the two objects, leading children to infer that the character really wanted to act on both items. For example, the explanation, ‘she did not want to break that one, so she did not touch it’ implies that the character might have wanted to act on the second item but refrained from

5 Note that there was one control trial where the character acted upon neither of the two objects mentioned in a disjunctive statement (0-Disjunct-True trials). However, in this trial, the character acted on a third alternative that was present in the scene—an alternative that was not present in any of the other trials. Although a basis for rejecting utterances existed within these particular control trials, this was not true of the critical (1-Disjunct-True and 2-Disjunct-True) trials, in which the third object was never present. On these trials, a disjunctive statement could only be false if the character did not perform the mentioned action on either of the two objects in the scene. This is a situation participants never saw, not even on the 0-Disjunct-True control trials. Given this pattern in the experiment, it is possible that both the control and critical trials created an expectation that the mentioned character (e.g. the chicken) would perform the mentioned action (e.g. pushing) on some object present in the scene.

doing so, and therefore failed to fully fulfil their goal. Such a focus could lead children to evaluate the sentence 'was Raffie right?' as pertaining to whether the chicken carried out their goal, rather than whether the puppet made the correct prediction. Aside from making the puppet's original statement more difficult to recall, this intervening material may have created confusion regarding the dimension upon which children were expected to make their judgments.

1.1. *The present study*

In the present study, we tested children in three between-subjects conditions. In the first condition, we sought to replicate Tieu *et al.* (2017) in English-speaking children, in order to confirm that their results were robust, and also not specific to French and Japanese. To do so, we used materials modelled directly after Tieu *et al.* In the second condition, we used the same materials, but removed the potentially confusing explanation sentence from the Tieu *et al.* protocol. Finally, in the third condition, we both removed this potentially confusing sentence and also made a key adjustment to the experiment that attempted to render the disjunctive statements felicitous. This trial type is similar to Tieu *et al.*'s 0-Disjunct-True trials. Specifically, we added a third alternative object that could be acted upon by the character, such that it became possible to imagine a scenario in which a disjunctive guess might be false. For example, in our version of the task, a character upon a hill might have three objects available to push (a bus, a car and a plane), such that the prediction 'The chicken pushed the bus or the car' could conceivably be false (e.g. if the chicken pushed the plane). Under these conditions, we asked whether children continue to exhibit conjunctive judgments, or whether such behaviours are instead an artefact of decision making under pragmatic uncertainty.

2. METHOD

2.1. *Participants*

We tested a group of 126 preschoolers between the ages of 4 and 6 years old, who were reported to be typically developing and whose primary language was English. Each child was assigned to one of three conditions. The *Replication* condition included 43 children (4;0–5;9, $M = 5;0$), the *Modified Script* condition included 41 children (4;0–5;10, $M = 4;10$), the *Three Alternatives* condition included 42 children (4;0–5;11, $M = 5;0$). The children were recruited from preschools in San Diego, CA, and Comox, BC, as well as the Fleet Science Center and the Birch Aquarium in San Diego, CA. Three additional children were tested but excluded from the analysis due to experimenter error.

2.2. *Materials and procedure*

We used an Acceptability Judgment Task closely modelled after the task in Tieu *et al.* (2017).⁶ In all three conditions, children sat in front of a laptop computer and were shown a series of PowerPoint slides, which depicted clipart stimuli. They were introduced to 'Raffie' a puppet dragon character who 'loves listening to stories' and were told that along with the experimenter and Raffie, they would watch stories about some friendly animals. The

6 We thank the authors for sharing their materials of the original study, which formed the basis for our own stimuli.

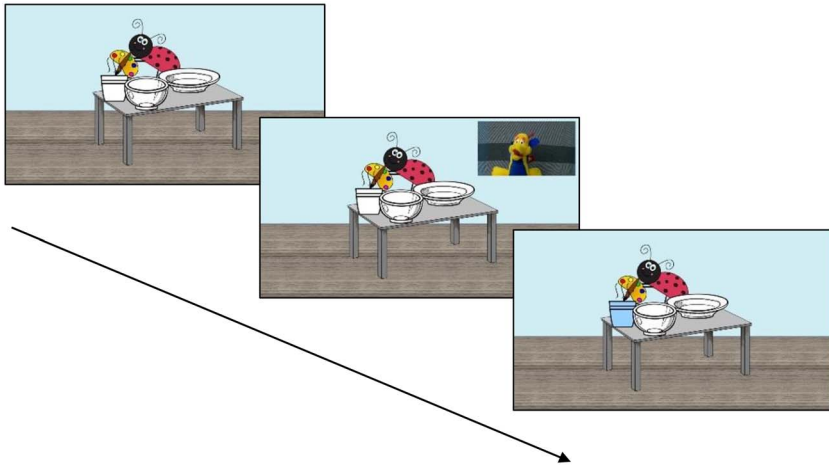


Figure 1 Example of a training trial.

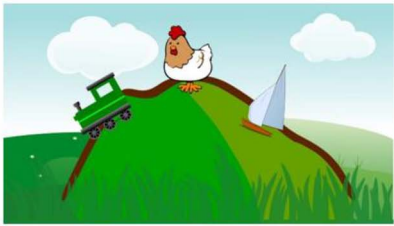
experimenter then asked Raffie to guess what would happen next in the story. The children's task was to say whether they thought Raffie did a good job at guessing and was right, or did a bad job at guessing and was wrong. Following the introduction, the experimenter made a mock video-call on the laptop and brought up a small video-window of Raffie to start the experiment. In each trial, children were shown an initial scene depicting an animal character and objects the character would interact with. A short script, read by the experimenter, identified the animal character (e.g. a ladybug), provided some context (e.g. she loves to paint) and brought attention to what the animal character could possibly do next (e.g. decide what she would like to paint). Then Raffie appeared in her video-window and the experimenter asked the puppet to guess what they thought actually happened in the story. The puppet answered by offering a statement (e.g. 'The ladybug painted the cup'). Finally, an outcome scene showed what the animal character actually did and children were asked to judge whether the puppet guessed correctly or not. An example of a training trial can be seen in Figure 1 below.

In all conditions, children first completed two training trials. These consisted of scenes like the one in Figure 1 above, for which Raffie's guess did not include the words *or* or *and*. In one of the training trials, Raffie guessed correctly and therefore she was right, and in the other one, Raffie guessed incorrectly and therefore was wrong. For the training trials, children were given feedback.

Following the training trials, the experimenter moved to the test phase of the experiment, which consisted of four 1-Disjunct-True trials, four 2-Disjunct-True trials, two 0-Disjunct-True control trials and three Filler trials, for a total of 13 within-subjects trials, in two orders, each the reverse of the other. For the Filler trials, Raffie made predictions without disjunction, similar to the training trials (e.g. 'The pig put on his hat'). Raffie's predictions were true for two of the Filler trials and false for the other one. For all remaining trials, Raffie made predictions using disjunctive statements of the type, 'The [animal character] [verbed] an X or a Y'. In the 1-Disjunct-True trials, the animal character interacted with only one of the objects; in the 2-Disjunct-True trials, the animal character interacted with both of the objects and finally in the 0-Disjunct-True trials, the animal character did not



1-Disjunct-True: “The chicken pushed the bus or the airplane.” (the chicken pushed the plane)



2-Disjunct-True: “The chicken pushed the train or the boat.” (the chicken pushed both)



0-Disjunct-True: “The penguin painted the fruits or the flowers”. (the penguin painted the vase)



Filler: “The monkey took his boots.” (the monkey took the umbrella)

Figure 2 Examples of outcome scenes and accompanying statements of the main phase trials. The actual outcome is described in parentheses.

interact with any of the mentioned objects, but instead interacted with a third item in the scene, as in the 0-Disjunct-True trials in Tieu *et al.* (2017). Examples of the final (outcome) scenes of the trials and accompanying statements can be seen in Figure 2 below and full scripts of example trials are available in supplementary materials to this article, available on the journal’s website.

There were the following differences between the three conditions. First, in only the *Replication* condition, after children watched the animal character act on one or two objects, the experimenter immediately re-described what had happened, which included reference to the objects. For example, in the 1-Disjunct-True trial (Figure 2), where the puppet (Raffie) said, ‘The chicken pushed the bus or the airplane’ but only pushed the airplane, the experimenter pointed to the bus and said, ‘Look, the chicken pushed that!’ (i.e. the bus). ‘She didn’t want to break that one (i.e. the airplane) so she didn’t touch it. So was Raffie right?’ It is possible that this reminder description, which inserted text between the prediction and the child’s assessment, may have made it more difficult for the child to recall the original utterance, particularly after many repeated trials with highly similar utterances and outcomes. Therefore, this reminder was removed in the *Modified Script* condition, which was identical to the *Replication* condition otherwise. Finally, the *Three Alternatives* condition was very similar to the *Modified Script* condition apart from the following difference: All trials which featured two objects in the *Modified Script* (and in the *Replication*) condition now included a third object, as in the 0-Disjunct True condition of Tieu *et al.* (see Figure 3).

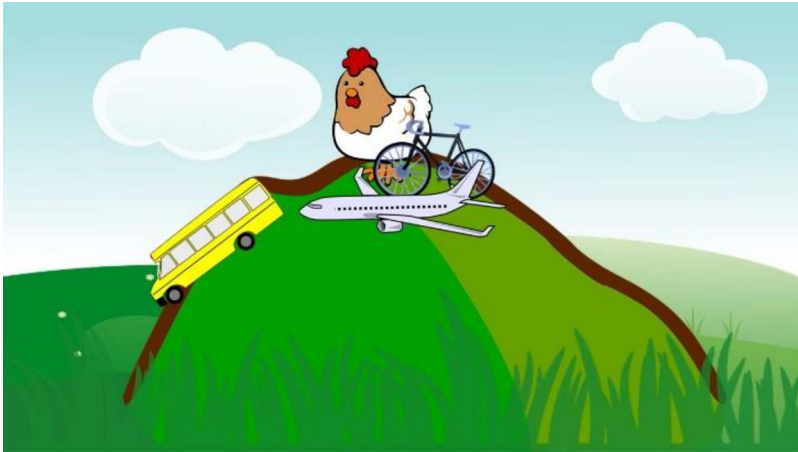


Figure 3 1-Disjunct-True (*Three Alternatives* condition). Notice the addition of a third item (bicycle) in the scene with the chicken.

3. RESULTS

We first describe a statistical model that compares children's performance across the three experimental conditions, to assess the degree to which they accepted 1-Disjunct-True and 2-Disjunct-True trials across the two conditions. Next, we categorised children according to their individual response patterns of accepting and rejecting trial types, following the scheme used by Tieu *et al.* (2017) to examine how many children fall into the 'Conjunctive' pattern of responders and how a more pragmatically felicitous disjunctive prediction in the *Three Alternatives* condition may have affected children's generalisations.

Overall, children correctly accepted the True Fillers (*Replication*: 91% correct; *Modified Script*: 90%; *Three Alternatives*: 89%; $p = 0.939^7$) and rejected both the 0-Disjunct-True trials (*Replication*: 79% correct; *Modified Script*: 79%; *Three Alternatives*: 80%; $P = 0.983$) and the False Fillers (*Replication*: 84% correct; *Modified Script*: 84%; *Three Alternatives*: 80%; $P = 0.998$) across conditions. In sum, performance on control items did not differ across conditions. Of particular interest were children's responses to the 1-Disjunct-True and 2-Disjunct-True trials. Following Tieu *et al.* (2017), we constructed separate mixed-effects logistic regressions for 1-Disjunct-True and 2-Disjunct-True trials with Condition (*Replication*, *Modified Script* and *Three Alternatives*) as a fixed factor and intercepts for Subject and Item as random effects. For 2-Disjunct-True trials, there was no effect of Condition ($M_{\text{REPLICATION}} = 0.90$; $M_{\text{MODIFIEDSCRIPT}} = 0.80$; $M_{\text{THREEALTERNATIVES}} = 0.88$; $\chi^2(2) = 3.721$, $P = 0.156$) with children being equally likely to accept them across the three conditions. For 1-Disjunct-True trials, there is an effect of Condition ($M_{\text{REPLICATION}} = 0.58$; $M_{\text{MODIFIEDSCRIPT}} = 0.66$; $M_{\text{THREEALTERNATIVES}} = 0.78$; $\chi^2(2) = 7.717$, $P = 0.021$), with children in the *Three Alternatives* condition being significantly more likely to accept 1-Disjunct-True trials than

7 These comparisons represent separate GLMM analyses for each trial type (True Fillers, False Fillers and 0-Disjunct-True trials) with Condition (*replication, modified script and three alternatives*) as a fixed factor and intercepts for Subject and Item as random effects.

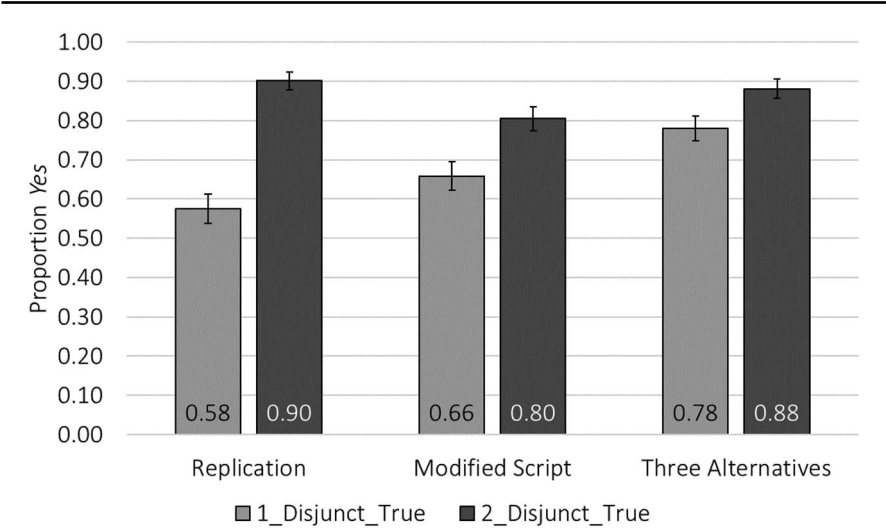


Figure 4 Children’s acceptance of disjunctive statements averaged across trials and subjects.

Table 1 Individual response patterns by condition.

	Inclusive	Exclusive	Conjunctive	Other
Tieu <i>et al.</i> 2017	14	3	19	10
Replication	21	1	14	7
Modified Script	21	4	7	9
Three Alternatives	31	1	4	6

children in the *Replication* condition ($z = 2.720$, $P = 0.007$). Children in the *Modified Script* condition accepted 1-Disjunct-True trials at a rate that was intermediate to the other two conditions, and which did not differ statistically from either the *Replication* condition ($z = 1.015$, $P = 0.310$), or the *Three Alternatives* condition ($z = -1.826$, $P = 0.068$). This suggests that simply removing the reminder description in the *Modified Script* condition did not alone have an effect, but that removing both the description and adding a third alternative in the *Three Alternatives* condition made children significantly more likely to accept the 1-Disjunct-True trials (Figure 4).

To determine how many children in our study exhibited a conjunctive pattern of responding, we next classified children following the scheme of Tieu *et al.* (2017). Specifically, if children accepted at least 3/4 1-Disjunct-True trials and rejected at least 3/4 2-Disjunct-True trials they were classified as ‘Exclusive’. Children who accepted at least 3/4 1-Disjunct-True and 2-Disjunct-True trials were classified as ‘Inclusive’. Children who rejected at least 3/4 1-Disjunct-True and accepted at least 3/4 2-Disjunct-True trials were classified as ‘Conjunctive’. All other children were classified as ‘Other’. Table 1 shows the results of this classification scheme in each condition.

In the *Replication* condition, there were 21 Inclusive children, 1 Exclusive child, 14 Conjunctive children and 7 children classified as ‘Other’. These numbers closely resemble

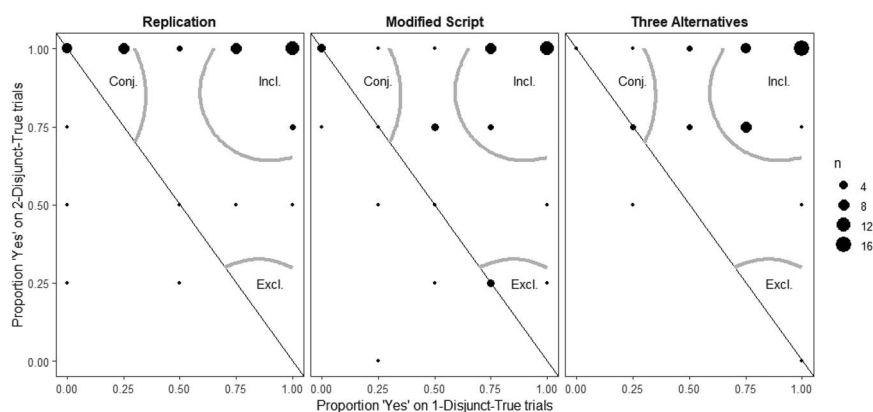


Figure 5 Children's rate of accepting disjunctive predictions on 1-Disjunct-True and 2-Disjunct-True trials, modelled after Figure 3 in Tieu *et al.* (2017). Vertices represent possible combinations of acceptance rates of each trial for one individual child. The size of each point corresponds to the number of children who responded at these rates. The top left corner corresponds to 'conjunctive' responders: children who rejected 1-Disjunct-True and accepted only 2-Disjunct-True trials. The bottom right corner corresponds to 'exclusive' responders: children who accepted only 1-Disjunct-True trials and 2-Disjunct-True trials. The top right corner corresponds to 'inclusive' responders: children who accepted disjunctions in either case.

Tieu *et al.* (2017), who found 14 Inclusive, 3 Exclusive, 19 Conjunctive and 10 Other.⁸ Although there were only 7 Conjunctive children in the *Modified Script* condition (21 Inclusive, 4 Exclusive and 9 Other), a Fisher's Exact Test on a 2×2 contingency table comparing the number of Inclusive v. Conjunctive children across the two conditions found no statistically significant difference ($P = 0.284$). In contrast, results were substantially different in the *Three Alternatives* condition. Here, the number of Inclusive children increased to 31 while the number of Conjunctive children was only 4. There was again only 1 Exclusive child and 6 children who were classified as 'Other'. A Fisher's Exact Test comparing the number of Inclusive and Conjunctive children between the *Replication* and *Three Alternatives* condition revealed a significant difference between the two, reflecting the fact that the *Replication* condition featured significantly more Conjunctive and fewer Inclusive children compared to the *Three Alternatives* condition (one-tailed $P = 0.006$). Critical to assessing the significance of the 4 remaining Conjunctive children identified in our study, this was fewer than the 6 children classified as 'Other'—a category which Tieu, *et al.* took to indicate noise. As we discuss in the General Discussion, some number of Conjunctive children should always be expected if some proportion of children guess randomly. With fewer Conjunctive than Other responders, random guessing may be the simplest explanation (Figure 5).

⁸ We did not exclude children for failing control trials as in Tieu *et al.* (since random guessing predicts equal numbers of correct and incorrect guesses, and it is impossible to symmetrically identify and remove correct guesses; see our discussion of data removal in the Introduction). Removing these children from our analyses has the following effects: (i) It reduces the number of Inclusive children across the three conditions and (ii) returns a statistically significant difference between the *Modified Script* and *Three Alternatives* conditions on 1-Disjunct-True trials.

4. DISCUSSION

In this study, we investigated the recent claim that a substantial percentage (41–67%) of preschool aged children interpret disjunctive statements of the form x or y as conjunctive (Singh *et al.* 2016; Tieu *et al.* 2017). In particular, we explored the hypothesis that children who appear to interpret disjunction conjunctively might be confused about the intended question of the experimenter. To test this, we first replicated Tieu *et al.* (2017) in English-speaking children in our *Replication* condition. When tested in this paradigm, we found that a substantial subset of children (14/43; 33%) performed as though 'conjunctive' and accepted disjunctive statements as descriptions of scenes in which both disjuncts were true, but not of scenes in which only one of the disjuncts was true. In the *Modified Script* condition, in which we removed a potentially confusing sentence from the script of the experiment 7 of 41 children (17%) performed as though conjunctive. Finally, in our *Three Alternatives* condition, where the puppet's predictions could plausibly be false, we found almost no conjunctive responders (4/42; 9.5%). While we cannot be sure whether the addition of a third alternative would alone be sufficient to reduce conjunctive responding, or whether the third alternative only had an effect in combination with the removal of the reminder statement, the key conclusion of this pattern of findings is that these contextual manipulations reduced the number of conjunctive children to almost zero, and below the number of children who did not interpret *or* in any systematic way and were classified as 'Other'.

These data lead us to two main conclusions. First, in keeping with a recent failure to replicate Tieu *et al.* (Sauerland & Yatsushiro 2018), our data suggest that the likelihood of conjunctive responding may be smaller than estimated by initial reports of this phenomenon, and may therefore not be detected in all studies. Second, our data also lead us to question the *nature* of this effect, and whether it reflects semantic competence or instead is the result of pragmatic uncertainty regarding the experimenter's intended question (as proposed in early reports of conjunctive responding, like Paris 1973, who found it not only for disjunction, but also for conditional statements).⁹ As noted in the Introduction, some children may have been confused by descriptions that intervened between the primary stimuli and the child's own judgment, e.g. either because the descriptions were themselves confusing, or because their addition made it more difficult for children to recall which prediction the puppet made (since multiple predictions were made in a single short session). Compatible with this concern, only 7 children remained conjunctive when this extraneous material was removed. Relatedly, we worried that when children are tested with 2 alternatives, some may be confused by the fact that the puppet's guess carried no information regarding the future acts of the chicken, and may therefore infer that the question cannot relate to the truth of the disjunctive statement (since it is necessarily true under any outcome where the chicken pushes something), but to some other question under discussion (QUD) that makes sense with respect to the situation at hand. Such an analysis is

9 In his study, Paris (1973) found that children not only accepted disjunctive statements when both disjuncts were true, but also that they accepted conditionals only when both the antecedent and the consequent were true. Presented with a sentence like, 'If the bird is in the nest, then the shoe is on the foot' children judged the sentence as true only when both the bird was in the nest and the shoe was on the foot (for similar results, see Romain *et al.* 1983; Barrouillet *et al.* 2008; Gauffroy & Barrouillet 2009; Markovits *et al.* 2016).

compatible with Crain *et al.*'s notion of 'plausible dissent', which argues that when children are unable to easily imagine a context in which an utterance might prove false, they evaluate it using idiosyncratic confabulated criteria (e.g. a contextually relevant alternative QUD). Adding a third alternative provides a condition in which the utterance can be false, satisfying plausible dissent, and leading to virtually no remaining conjunctive responses.¹⁰

Critically, the hypothesis that conjunctive responding is the product of confusion is not itself meant to be a formal account of what generates conjunctive responses. Instead, our contention is that not all behavioural responses signal systematic knowledge states that merit semantic modelling. First, children often provide behavioural responses which we know are at odds with their cognitive states, either due to problems of inhibitory control (Zelazo *et al.* 1995; Munakata *et al.* 2011), or due to pragmatic infelicities of experimental design. For example, Piaget famously claimed that 5-year-old children lack a complete concept of number because, after counting two lines of objects and judging them to be equal, these children can be led to judge that one of these lines has *more* objects than the other by the experimenter spreading it out. Subsequent work showed that these responses had nothing to do with number word knowledge at all, but instead children's uncertainty about what question was intended by the experimenter. In one such study, McGarrigle & Donaldson (1978) showed that if one line of objects is stretched *accidentally* rather than intentionally (i.e. by an angry teddy), children no longer interpret the transformation as relevant to the speaker's request and continue to judge the two sets as equal when asked a second time. Likewise, if children are simply asked the question only once—after the transformation—they judge the two sets to be numerically equal (Rose & Blank 1974). These studies show that 5-year-old children know that one-to-one correspondence establishes that two sets have the same cardinality, and that length is irrelevant to equality, but that they are willing to override their semantic knowledge and consider length if this renders the experimenter's question felicitous in the context. Piaget's original conclusion that children lack knowledge of number is unwarranted, even if there is no alternative formal account of children's failure on the original task.

Second, although it is potentially meaningful when children provide consistent responses, children notoriously persevere in ways that conflict with knowledge they reveal in different paradigms, or in ways that are entirely meaningless. For example, although 3- and 4-year-old children can easily sort objects by either shape or colour, when they are asked to switch dimensions halfway through a study, they often fail and continue sorting the same way, despite the fact that this results in responses that conflict with their independently demonstrated category knowledge (Zelazo *et al.* 1995). More strikingly, children also persevere when their initial response does not reflect any particular knowledge state (Osler & Kofsky 1965). For example, when 4- to 8-year-old children are shown shapes that vary in colour and size and are asked to guess whether they belong to a category (e.g. where 'red squares' might be rewarded), half of the children who fail to learn the correct category repeatedly make the same response, even though they are given feedback that this response is incorrect. Findings such as these indicate that children often respond consistently in an

10 This analysis can also explain Singh *et al.* (2016), in which disjunctive statements were also always trivially true (i.e. there was no basis provided in the context that might render them false).

experiment even when these responses are contrary to their knowledge state, or follow an initial random guess.¹¹

Our data suggest that conjunctive responses are quite infrequent, and even without manipulating meaningful aspects of study design—e.g. the number of alternatives—conjunctive responders represent only about 17% of all children. Although we believe that this pattern of findings is unlikely to be the systematic product of multiple exhaustification or any other single factor, one might consider making additional assumptions in an effort to explain this small segment of the data via a formal mechanism. For example, to explain the reduction in conjunctive responders in our Three Alternatives condition, one might hypothesise that adding extra objects expands the range of alternatives considered, and as a result changes which parses the listener prefers. In their paper, Singh *et al.* (2016) propose that parses which provide complete answers to a QUD¹² are preferred over those that do not, and that if there is no parse that provides a complete answer, simpler parses without exhaustification should be preferred instead. In particular, they assume that children have three different parses available to them when interpreting disjunctive statements: One without any exhaustification operators, which results in an inclusive interpretation, one with only one exhaustification operator, which also results in an inclusive interpretation, and one with two exhaustification operators, which results in a conjunctive interpretation.¹³

This hypothesized parsing strategy predicts a difference between two-object and three-object trials. For example, if we assume that the inferred QUD in the experiment is something like, 'What does the chicken push down the hill?', then what counts as a 'complete answer' changes with respect to the number of objects in the scene. In the two-object trials (where only a bus and an airplane are present), the conjunctive parse of 'The chicken pushes the bus or the airplane' would provide a complete answer (and a more informative prediction). Such a parse would inform the hearer about what happens to each object (i.e. the chicken pushes both). In contrast, the other parses would only partially answer the QUD—the parses would give the hearer some information (i.e. that at least one of the objects was going to be pushed) but ultimately not a complete picture relative to the QUD (i.e. the inclusive parses would not inform the hearer about which of the objects were going to be pushed nor about whether only one or two objects were going to be pushed). When a third object is present, however, the situation changes. Now, the conjunctive parse fails to address the outcome of the third object, and hence no longer provides a complete answer to the QUD. The conjunctive parse provides some information (i.e. what happens to two of the objects—the bus and the airplane) but it does not provide a complete picture (i.e.

11 In past work, some children provide justifications for conjunctive responses that are potentially compatible with a conjunctive semantics. For example, when asked why they rejected disjunctive sentences when only one disjunct was true some responded by noting that one of the disjuncts was false (e.g. *he does not have both*). However, because these statements are just true descriptions of scenes, and not necessarily explanations of why the scenes led children to their judgments, they only tell us that children know what happened, not how they interpreted the utterance.

12 Singh *et al.* define QUD in the formal sense as outlined in Groenendijk and Stokhof (1984). We are using the term in the same sense. See also the discussions in Lewis (1988), Roberts (2012), and references therein.

13 Note that the addition of any further exhaustification operators results in a parse that is equivalent to the option with two operators.

the hearer has no information about whether or not the chicken pushes the third object—the bike). Therefore, according to Singh *et al.*'s parsing strategy, the conjunctive parse should no longer be preferred over an inclusive parse. In fact, since the inclusive parses are syntactically simpler, they should be preferred over the conjunctive parse.¹⁴

However, even this modification may not provide an adequate description of remaining conjunctive responses.¹⁵ A key difficulty is that this proposal only explains our data if we assume that children do not compute an *ad hoc* implicature in the Three Alternatives condition (i.e. if we assume they do not get the implication that unmentioned objects are not acted upon). If, in the Three Alternatives condition, children *do* compute an *ad hoc* implicature, and infer that the unmentioned object was not acted upon (in the example above, that the chicken does not push the bike), then the conjunctive parse resulting from double exhaustification should once again provide a complete answer to the QUD—i.e. it should communicate that the chicken pushes the airplane and the bus but not the (unmentioned) bike. This prediction remains no matter how *ad hoc* implicatures are computed, whether the third object alters the alternatives that are considered by the exhaustification operator (e.g. 'The chicken pushed the bike' is an alternative which has the same status as 'The chicken pushed the airplane') or whether instead *ad hoc* implicatures are computed by general Gricean mechanisms. Children's ability to compute such *ad hoc* implicatures is well attested (see Papafragou & Tantalou 2004; Barner *et al.* 2011; Stiller *et al.* 2015; Barner *et al.* 2018).¹⁶

Although our data bear most directly on the role of multiple exhaustification in child language, they may also have consequences for hypotheses regarding adult language. Most extant data testing children's interpretations of disjunction, including ours, can be explained by single exhaustification and a lack of access to conjunctive alternatives, similar to what has been argued for SIs involving quantifiers (Chierchia *et al.* 2001; Barner & Bachrach 2010; Barner *et al.* 2011; Foppolo *et al.* 2012; Hochstein *et al.* 2014; Horowitz *et al.*

14 A variant of this idea is to propose that children prefer informative parses over uninformative ones (cf. Huang & Crain *under review*). If children assume that at least one object will be acted upon, then in the two-object case only the conjunctive parse is informative, amongst the parses that do not use the 'and' alternative, whereas all three parses provide at least some information in the three-object context. The result is that in the three-object case, there should not be any preference for one parse over another, contrary to our experimental results where it is clear that the less-informative inclusive parse is preferred.

15 In the main text, we outline only one significant challenge but there are others. For example, adults do not always favour simpler parses over more complex ones when no parse is a complete answer to the QUD (i.e. in certain conditions where both inclusive and exclusive interpretations of disjunction are under-informative, adults still prefer an exclusive interpretation over an inclusive one despite the fact that the exclusive parse is plausibly more complex: see Huang & Crain *under review*). Also, such a parsing strategy has difficulty explaining why conjunctive parses would be completely absent in conditions that test for ignorance implicatures (see Hochstein *et al.* 2014).

16 Note that the alternative proposal outlined in footnote 12 is unaffected whether or not *ad hoc* implicatures are posited, since in either case both an inclusive and a conjunctive parse should be considered when three objects are present, whereas only the conjunctive parse should be considered in a two-object context. However, on that proposal, there is no explanation for why children should not continue to prefer a conjunctive parse, since it provides more information than an inclusive one even in a three-object context being the only parse that provides a complete answer that addresses the outcome for all three contextually available objects.

2017; Stiller *et al.* 2015; Skordos & Papafragou 2016). This is important, because multiple exhaustification is often invoked to explain free-choice readings (Kratzer & Shimoyama 2002; Alonso-Ovalle 2006; Chierchia 2006; Fox 2007), in which children and adults derive conjunctive interpretations for utterances like 'The girl is allowed to eat pizza or pasta for lunch' (Zhou *et al.* 2013; Tieu *et al.* 2015; Pagliarini *et al.* 2018, for discussion). On such accounts, free-choice inferences arise from multiple exhaustification and do not consider conjunctive alternatives, and therefore are computed much like the conjunctive inferences proposed by Tieu *et al.* (2016) and Singh *et al.* (2016).¹⁷ If children do not deploy multiple exhaustification to interpret disjunctive statements, or do so very infrequently, then some other mechanism might be required to explain children's systematic conjunctive readings of free-choice statements, which they compute over 90% of the time (Zhou *et al.* 2013; Tieu *et al.* 2015). One possibility, for example, are accounts that invoke semantic mechanisms available to both adults and children, such as those that build free-choice inferences into the semantic interaction between modals and disjunction, separate from the mechanisms that are used to derive SIs (see Zimmermann 2000; Aloni 2003, 2007; Simons 2005; Klindinst 2007; Bar-Lev & Fox 2017). Though evidence from children alone should not be decisive in deciding between theories, and many other considerations are relevant (Katzir 2007; Fox & Katzir 2011; Franke 2011; Crnić *et al.* 2015; Spector 2016), our findings nevertheless argue that child data do not provide straightforward evidence in favour of multiple exhaustification. Future studies should explore this issue, as well as the possibility that multiple exhaustification emerges later in acquisition, or that alternative versions of multiple exhaustification (e.g. that do not predict conjunctive children) might better conform to children's behaviours.

Acknowledgements

Thank you to the many families and preschools who participated in this research, as well as the Fleet Science Center. Thank you also to Junyi Chu and members of the Language and Development Lab for help in collecting data. This work was funded in part by a grant to D.B. from the James S. McDonnell Foundation and a SSHRC Insight grant to A.B.

References

- Aloni, Maria (2003), 'Free Choice in modal contexts'. In M. Weisgerber (ed.), *Sinn und Bedeutung*, vol. 7. Universität Konstanz. 1–13.
- Aloni, Maria (2007), 'Free choice, modals, and imperatives'. *Natural Language Semantics* 15: 65–94.
- Alonso-Ovalle, L. (2006), *Disjunction in alternative semantics*. UMass Amherst PhD dissertation.
- Bar-Lev, M. E. & D. Fox (2017), 'Universal free choice and innocent inclusion'. *Semantics and Linguistic Theory* 27: 95–115.
- Barner, D. & A. Bachrach (2010), 'Inference and exact numerical representation in early language development'. *Cognitive Psychology* 60: 40–62.
- Barner, D., N. Brooks & A. Bale (2011), 'Accessing the unsaid: The role of scalar alternatives in children's pragmatic inference'. *Cognition* 188: 87–96.

17 Note that all accounts assume that children lack access to conjunctive alternatives when interpreting disjunction, as shown, for example, by their failure to compute exclusivity inferences. Assuming that children *can* access stronger alternatives would not rescue multiple exhaustification, since it would then predict exclusivity inferences in children, as in adults.

- Barner, D., L. K. Hochstein, M. P. Rubenson & A. Bale (2018), 'Four-year-old children compute scalar implicatures in absence of epistemic reasoning'. *Semantics in Language Acquisition* 24: 325.
- Barrouillet, P., C. Gauffroy & J. F. Lecas (2008), 'Mental models and the suppositional account of conditionals'. *Psychological Review* 115: 760.
- Braine, M. & B. Romain (1981), 'Children's comprehension of 'or': Evidence for a sequence of competencies'. *Journal of Experimental Child Psychology* 31: 46–70.
- Brooks, P. J. & I. Sekerina (2005), 'Shortcuts to quantifier interpretation in children and adults'. *Language Acquisition* 13: 177–206.
- Chierchia, G. (2004), 'Scalar implicatures, polarity phenomena and the syntax / pragmatics interface'. In A. Belletti (ed.), *Structures and Beyond*. Oxford University Press. Oxford. 39–103.
- Chierchia, G. (2006), 'Broaden your views: Implicatures of domain widening and the 'logicality' of language'. *Linguistic Inquiry* 37: 535–90. doi: [10.1162/ling.2006.37.4.535](https://doi.org/10.1162/ling.2006.37.4.535).
- Chierchia, G., S. Crain, M. T. Guasti, Gualmini A. & L. Meroni (2001), 'The acquisition of disjunction: Evidence for a grammatical view of scalar implicatures'. *Proceedings from the Annual Boston University Conference on Language Development* 25: 157–68.
- Chierchia, G., D. Fox & B. Spector (2009), 'Hurford's Constraint and the Theory of Scalar Implicatures'. In P. Egré and G. Magri (eds.), *Presuppositions and Implicatures, Proceedings of the MIT-Paris Workshop*. MIT Working Papers in Linguistics. Cambridge, MA. 47–62.
- Chierchia, G., M. T. Guasti, A. Gualmini, L. Meroni, Crain S. & F. Foppolo (2004), 'Semantic and pragmatic competence in children's and adults' comprehension of or'. In Ira Noveck and Dan Sperber (eds.), *Experimental pragmatics* 283–300. Palgrave Macmillan. New York.
- Crain, S. & D. Khlentzos (2010), 'The logic instinct'. *Mind & Language* 25: 30–65.
- Crain, S., R. Thornton, C. Boster, L. Conway, Lillo-Martin D. & E. Woodams (1996), 'Quantification without qualification'. *Language Acquisition* 5: 83–153.
- Crnič, L., E. Chemla & D. Fox (2015), 'Scalar implicatures of embedded disjunction'. *Natural Language Semantics* 23: 271–305.
- Drozd, K. F. (2001), 'Children's Weak Interpretations of Universally Quantified Questions'. In M. Bowerman and S. C. Levinson (eds.), *Language Acquisition and Conceptual Development*. Cambridge University Press. Cambridge, England.
- Drozd, K. & E. van Loosbroek (1999), 'Weak quantification, plausible dissent, and the development of children's pragmatic competence'. In A. Greenhill, H. Littlefield and C. Tano (eds.), *The Proceedings of the 23d Annual Boston University Conference on Language Development*. Cascadilla Press. Somerville MA. 184–95.
- Foppolo, F., M.T. Guasti & G. Chierchia (2012), 'Scalar implicatures in child language: Give children a chance'. *Language Learning and Development* 8:365–94.
- Fox, D. (2007), 'Free choice and the theory of scalar implicatures'. In Uli Sauerland and Penka Stateva (eds.), *Presupposition and Implicature in Compositional Semantics*. Palgrave Macmillan. Houndmills, Basingstoke.
- Fox, D. & R. Katzir (2011), 'On the characterization of alternatives'. *Natural Language Semantics* 19: 87–107.
- Franke, M. (2011), 'Quantity implicatures, exhaustive interpretation, and rational conversation'. *Semantics and Pragmatics* 4: 1–82. doi: [10.3765/sp.4.1](https://doi.org/10.3765/sp.4.1).
- Freeman, N., C. Sinha & J. Stedmon (1982), 'All the cars—which cars? From word meaning to discourse analysis'. In M. Beveridge (ed.), *Children Thinking through Language*. Edward Arnold. London. 53–74.
- Gauffroy, C. & P. Barrouillet (2009), 'Heuristic and analytic processes in mental models for conditionals: An integrative developmental theory'. *Developmental Review* 29: 249–282.

- Gazdar, G. (1979), *Pragmatics: Implicature, Presupposition, and Logical Form*. Academic Press. New York.
- Geurts, B. (2003), 'Quantifying kids'. *Language Acquisition* 11:197–218.
- Geurts, Bart (2010), *Quantity Implicatures*. Cambridge University Press. Cambridge.
- Goro, T. & S. Akiba (2004), 'The acquisition of disjunction and positive polarity in Japanese'. In *Proceedings of the 23rd West Coast conference on formal linguistics* (pp. 251–264). Cascadilla Press. Somerville, MA.
- Goro, T., U. Minai & S. Crain (2005), 'Two disjunctions for the price of only one'. In *29th Boston University Conference on Child Language* (pp. 228–239). Cascadilla Press.
- Groenendijk, J. A. G. & M. J. B. Stokhof (1984), *Studies on the Semantics of Questions and the Pragmatics of Answers* (Doctoral dissertation, Univ. Amsterdam).
- Gualmini, A. & S. Crain (2002), 'Why No Child or Adult Must Learn De Morgan's Laws'. *Proceedings of the 26th Boston University Conference on Language Development* 243–254. Cascadilla Press. Somerville, MA.
- Jing, C., S. Crain & C.-F. Hsu (2005), 'The interpretation of focus in Chinese: child vs. adult language'. In Y. Otsu (ed.), *Proceedings of the Sixth Tokyo Conference on Psycholinguistics*. 165–190.
- Grice, P. (1989), *Studies in the Way of Words*. Harvard University Press. Cambridge.
- Gualmini, A., S. Crain, L. Meroni, Chierchia G. & M. T. Guasti (2001), 'At the semantics/pragmatics interface in child language'. In *Proceedings of Semantics and Linguistic theory XI*. CLC Publications, Department of Linguistics, Cornell University. Ithaca, NY.
- Hochstein, L., A. Bale, D. Fox & D. Barner (2014), 'Ignorance and inference: Do problems with Gricean epistemic reasoning explain children's difficulty with scalar implicature?'. *Journal of Semantics* 33:107–35.
- Horowitz, A. C., R. M. Schneider & M. C. Frank (2018), 'The trouble with quantifiers: Exploring children's deficits in scalar implicature'. *Child Development* 89: 572–593.
- Huang, H. & S. Crain (under review). *When OR is assigned a conjunctive inference in child language*.
- Inhelder, B. & J. Piaget (1964), *The Early Growth of Logic in the Child: Classification and Seriation*. Routledge and Kegan Paul. London.
- Katsos, N. & D. V. Bishop (2011), 'Pragmatic tolerance: Implications for the acquisition of informativeness and implicature'. *Cognition* 120: 67–81.
- Katzir, R. (2007), 'Structurally defined alternatives' *Linguistics and Philosophy* 30:669–90.
- Klinedinst, N. (2007), *Plurality and Possibility*. University of California. Los Angeles dissertation.
- Kratzer, A. & Junko Shimoyama (2002), 'Indeterminate pronouns: The view from Japanese'. In Yukio Otsu (ed.), *Third Tokyo conference on psycholinguistics*. Hituzi Syobo. Tokyo. 1–25.
- Lewis, D. (1988), 'Relevant Implication'. *Theoria* 54: 162–174.
- Markovits, H., J. Brisson & P. L. de Chantal (2016), 'How do pre-adolescent children interpret conditionals?'. *Psychonomic bulletin & review* 23: 1907–1912.
- McCawley, J. D. (1993), *Everything that Linguists have Always Wanted to Know About Logic* (But Were Ashamed to Ask)*, 2nd edn. Chicago University Press.
- McGarrigle, J. & M. Donaldson (1974), 'Conservation accidents'. *Cognition* 3: 341–350.
- Meyer, M.-C. (Forthcoming), 'An apple or a pear: free choice disjunction'. In L. Matthewson, C. Meier, H. Rullmann and T. E. Zimmermann (eds.), *The Companion to Semantics*. Wiley's Linguistics Companion Series.
- Munakata, Y., S. A. Herd, C. H. Chatham, B. E. Depue, Banich M. T. & R. C. O'Reilly (2011), 'A unified framework for inhibitory control'. *Trends in cognitive sciences* 15: 453–459.
- Notley, A., P. Zhou, B. Jensen & S. Crain (2012), 'Children's interpretation of disjunction in the scope of 'before': a comparison of English and Mandarin'. *Journal of Child Language* 39: 482–522.

- Noveck, Ira (2001), 'When children are more logical than adults: Investigations of scalar implicature'. *Cognition* 78: 165–88.
- Osler, S. F. & E. Kofsky (1965), 'Stimulus uncertainty as a variable in the development of conceptual ability'. *Journal of Experimental Child Psychology* 2: 264–79.
- Pagliarini, E., C. Bill, J. Romoli, Tieu L. & S. Crain (2018), 'On children's variable success with scalar inferences: Insights from disjunction in the scope of a universal quantifier'. *Cognition* 178: 178–92.
- Papafragou, A. & J. Musolino (2003), 'Scalar implicatures: Experiments at the semantics pragmatics interface'. *Cognition* 86: 253–82.
- Papafragou, A. & N. Tantalou (2004), 'Children's computation of implicatures'. *Language Acquisition* 12: 71–82.
- Paris, S. G. (1973), 'Comprehension of language connectives and propositional logical relationships'. *Journal of Experimental Child Psychology* 16: 278–91.
- Pelletier, F. J. (1977), 'Or'. *Theoretical Linguistics* 4: 61–74.
- Philip, W. (1991), *Spreading in the Acquisition of Universal Quantifiers*, vol. 10. WCCFL. 359–73.
- Philip, W. (1995), *Event quantification in the acquisition of universal quantification* Doctoral dissertation. University of Massachusetts. Amherst.
- Pouscoulous, N., I. Noveck, G. Politzer & A. Bastide (2007), 'Processing costs and implicature development'. *Language Acquisition* 14: 347–75.
- Reinhart, T. (2004), 'The processing cost of reference set computation: Acquisition of stress shift and focus'. *Language Acquisition* 12: 109–55.
- Roberts, C. (2012), 'Information structure: Towards an integrated formal theory of pragmatics'. *Semantics and Pragmatics* 5: 6–1.
- Roeper, T. & J. De Villiers (1993), 'Emergence of bound variable structures'. In E. Reuland and W. Abraham (eds.), *Knowledge and Language: From Orwell's Problem to Plato's Problem*. Kluwer. Dordrecht. 105–39.
- Rose, S. A. & M. Blank (1974), 'The potency of context in children's cognition: An illustration through conservation'. *Child Development* 45: 499–502.
- Rumain, B., J. Connell & M. D. Braine (1983), 'Conversational comprehension processes are responsible for reasoning fallacies in children as well as adults: If is not the biconditional'. *Developmental psychology* 19: 471.
- Sauerland, U. (2004), 'Scalar implicatures in complex sentences'. *Linguistics and Philosophy* 27: 367–91.
- Sauerland, U. & K. Yatsushiro (2018), 'The acquisition of disjunctions: Evidence from German children'. In *Proceedings of Sinn und Bedeutung* 21: 1065–1072.
- Schooler, J. (2011), 'Unpublished results hide the decline effect'. *Nature* 470: 437.
- Simons, Mandy (2005), 'Dividing things up: The semantics of 'or' and the modal/'or' interaction'. *Natural Language Semantics* 13: 217–316.
- Singh, R., K. Wexler, A. Asle-Rahim, Kamawar D. & D. Fox (2016), 'Children interpret disjunction as conjunction: Consequences for theories of implicature and child development'. *Natural Language Semantics* 24: 305–52.
- Skordos, D. & A. Papafragou (2016), 'Children's derivation of scalar implicatures: Alternatives and relevance'. *Cognition* 153: 6–18.
- Smith, C. L. (1980), 'Quantifiers and question answering in young children'. *Journal of Experimental Child Psychology* 30: 191–205.
- Spector, B. (2003), 'Scalar implicatures: Exhaustivity and Gricean reasoning'. *Proceedings of the ESSLI* 3: 277–88.
- Spector, B. (2006), *Aspects de la pragmatique des opérateurs logiques* Ph.D. thesis, vol. 7. Université Paris. Paris.
- Spector, B. (2016), 'Comparing exhaustivity operators'. *Semantics and Pragmatics* 9: 11–1.

- Stiller, A. J., N. D. Goodman & M. C. Frank (2015), 'Ad-hoc implicature in preschool children'. *Language Learning and Development* 11: 176–90.
- Su, Y. (2014), 'The acquisition of logical connectives in child Mandarin'. *Language Acquisition* 21: 119–155.
- Tieu, L., J. Romoli, P. Zhou & S. Crain (2015), 'Children's knowledge of free choice inferences and scalar implicatures'. *Journal of Semantics* 33: 269–298.
- Tieu, L., J. Romoli, P. Zhou & S. Crain (2016), 'Children's knowledge of free choice inferences and scalar implicatures'. *Journal of Semantics* 33: 269–98. doi: 10.1093/jos/ffv001.
- Tieu, L., K. Yatsushiro, A. Cremers, J. Romoli, Sauerland U. & E. Chemla (2017), 'On the role of alternatives in the acquisition of simple and complex disjunctions in French and Japanese'. *Journal of Semantics* 34: 127–52.
- Zelazo, P. D., J. S. Reznick & D. E. Piñon (1995), 'Response control and the execution of verbal rules'. *Developmental Psychology* 31: 508.
- Zhou, P., J. Romoli & S. Crain (2013, August), 'Children's knowledge of free choice inferences'. In *Semantics and Linguistic Theory* 23: 632–651.
- Zimmermann, T. Ede (2000), 'Free choice disjunction and epistemic possibility'. *Natural Language Semantics* 8: 255–90.

APPENDIX: The scripts for the same test trial across the three conditions

Replication Condition

[1] Once there was a chicken who loved to play with her toys, and she especially loved to push them! One day her father gave her two new toys: a bus and an airplane! The chicken was very happy to play with them. Let's see if Raffie can guess what happened next.

[2] EXP: Raffie, tell us, what happened next?

PUP: The chicken pushed the bus or the airplane.

EXP: Let us see if Raffie was right!

[3] Look, the chicken pushed that! She did not want to break that one so she did not touch it. So was Raffie right?

Modified Script Condition

[1] Once there was a chicken who loved to play with her toys, and she especially loved to push them! One day her father gave her two new toys: a bus and an airplane! The chicken was very happy to play with them. Let's see if Raffie can guess what happened next.

[2] EXP: Raffie, tell us, what happened next?

PUP: The chicken pushed the bus or the airplane.

EXP: Let's see if Raffie was right!

[3] So was Raffie right?

Three alternatives condition

[1] Once there was a chicken who loved to play with her toys, and she especially loved to push them! One day her father gave her three new toys: a bus, a bike, and an airplane! The chicken was very happy to play with them. Let us see if Rafie can guess what happened next.

[2] EXP: Rafie, tell us, what happened next?

PUP: The chicken pushed the bus or the airplane.

EXP: Let us see if Rafie was right!

[3] So Rafie right?